

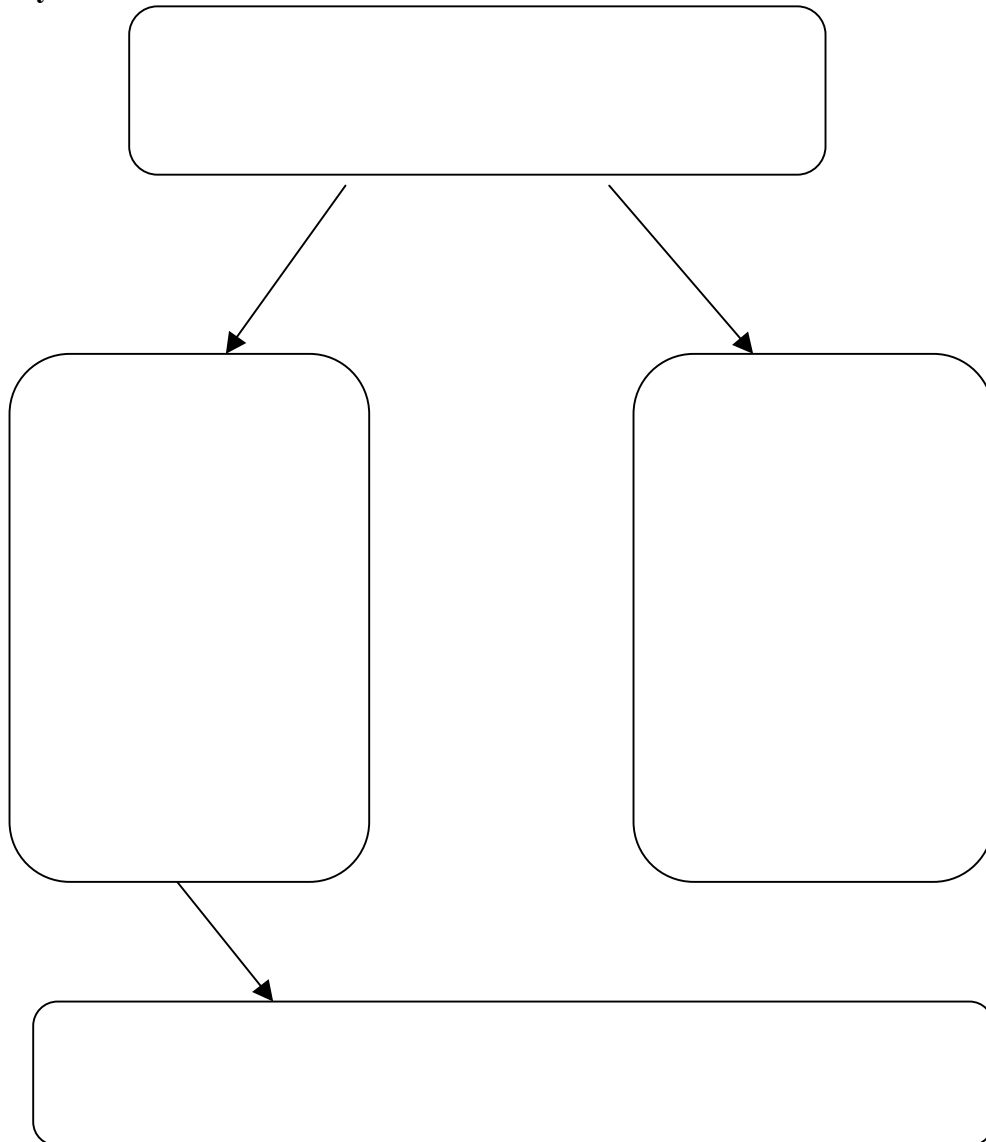
CITY GOVERNMENT AND SPECIAL-PURPOSE DISTRICTS

1. What is a municipality?
2. What three requirements must be met in order to be chartered as a city?
3. What limits a city's ability to provide services?
4. List some examples of services that city government's provide.

Forms of City Government

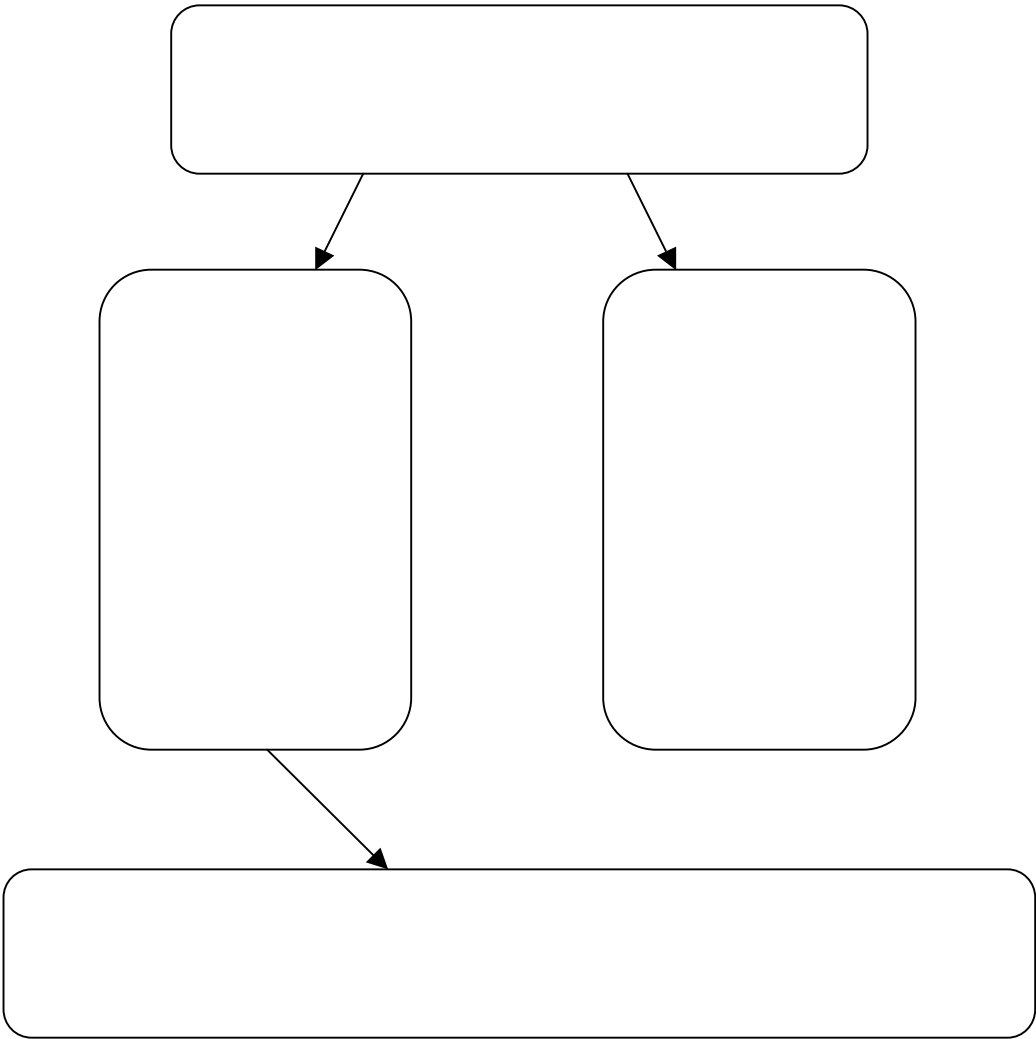
Fill in the graphic organizers below to explain the different forms of city governments.

Weak Mayor-Council Form



CITY GOVERNMENT AND SPECIAL-PURPOSE DISTRICTS

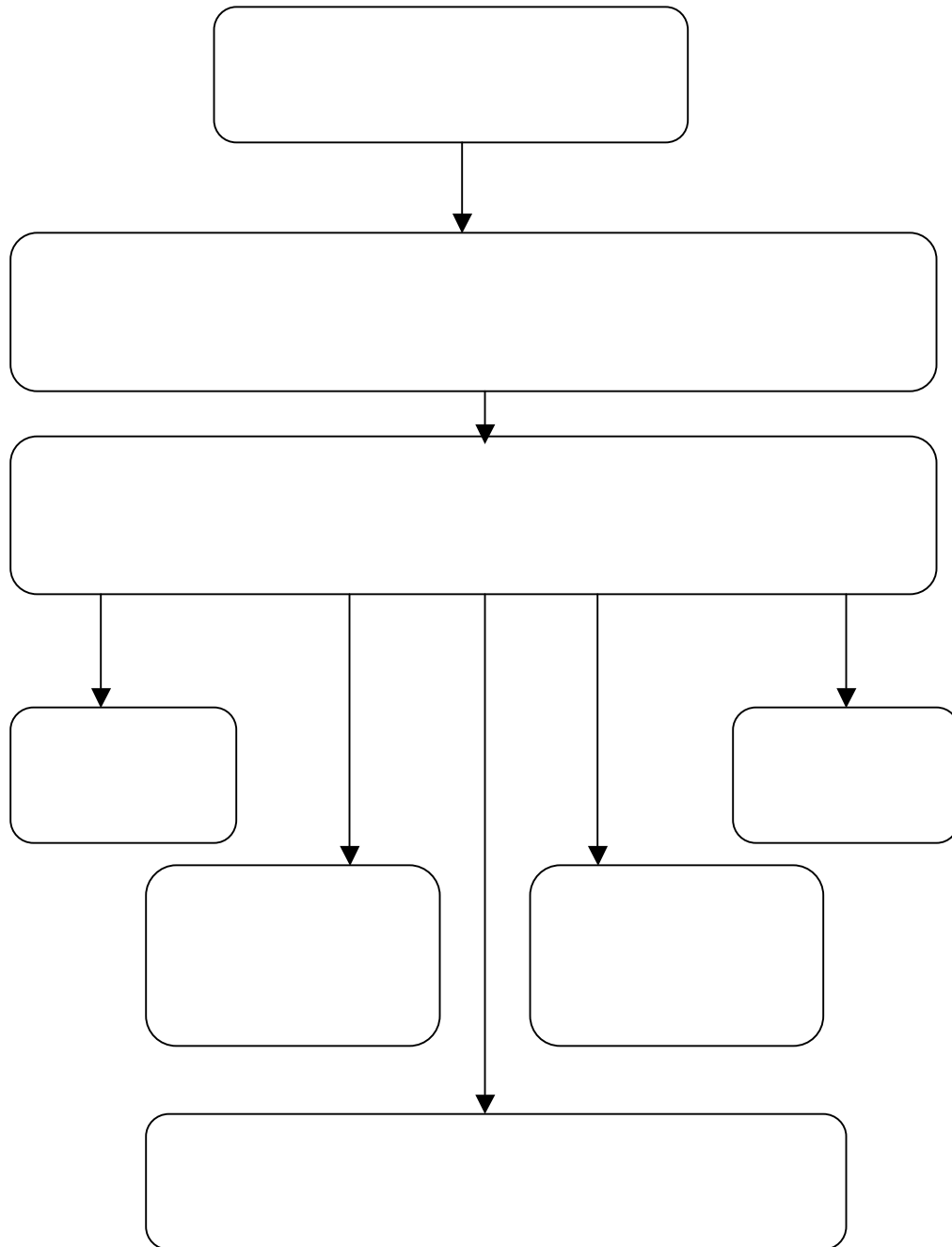
Strong Mayor-Council Form



5. What is the difference in a weak mayor-council and a strong mayor-council?

CITY GOVERNMENT AND SPECIAL-PURPOSE DISTRICTS

Council-Manager Form of Government



6. In what ways is a mayor-council form of government different from a council-manager form of government?
7. Which of the three types of county governments do you think would operate the best and why?

CITY GOVERNMENT AND SPECIAL-PURPOSE DISTRICTS

City-County Government

8. Name three services that counties often provide outside of incorporated municipalities.

9. What is one thing that a county and city government can do so that they do not duplicate services to citizens?

Special-Purpose District

10. What is a special purpose district?

11. List three examples of a special purpose district and explain how each works.